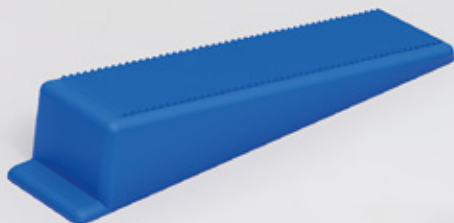


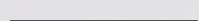


for  
high quality  
tiling  
installations

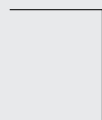
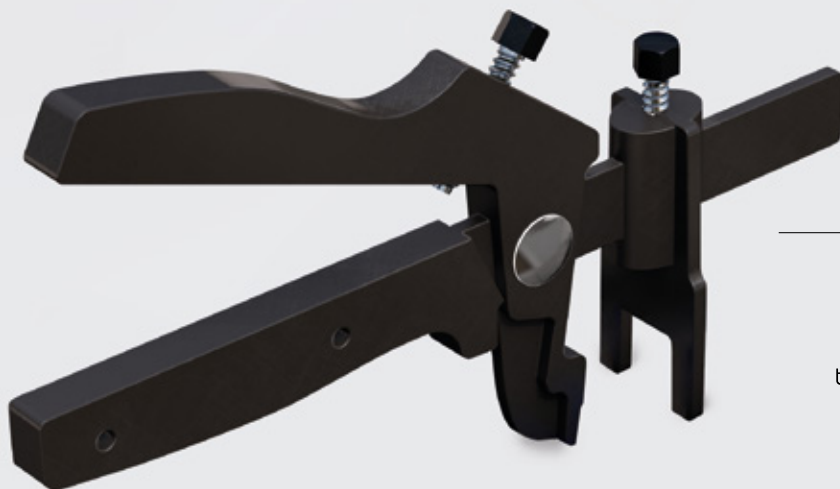
# TOKOZ tls-W Series



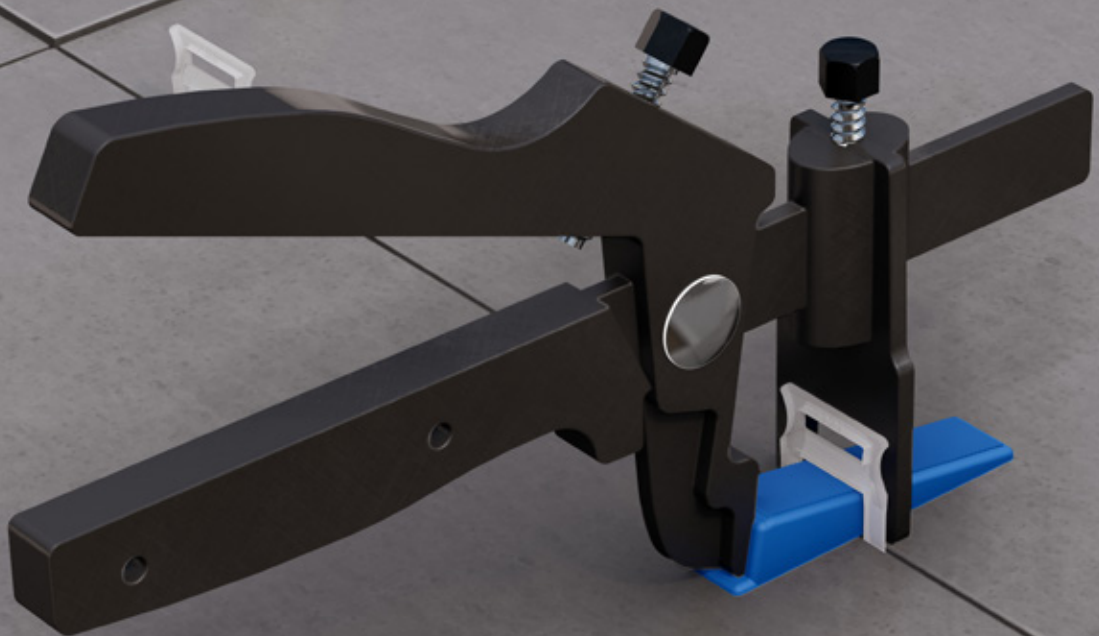
tls-Ws



tls-Ww



tls-Wp



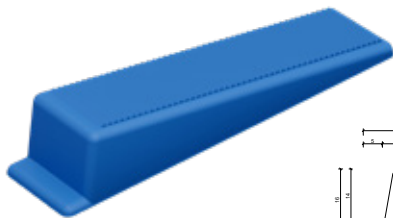


## What is tls Wedge?

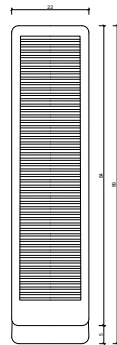
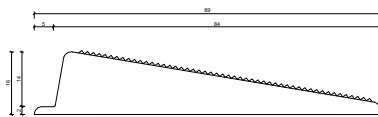
It is a tile leveling system, used in the installation of artificial and natural tiles and ensures that the material is paved more easily, faster and more evenly. It includes system leveling wedge **tls-Ww**, holder join **tls-Ws** and pliers **tls-Wp**.

tls-Ww

These are the wedges that are placed to the empty holes of the holder joints and used in the process of leveling of the coating materials.

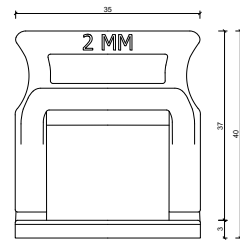
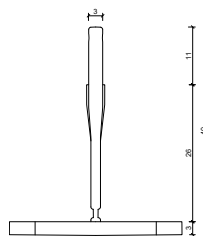
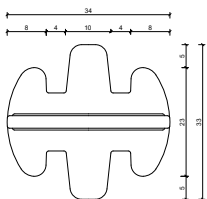


100 pcs/package



Holder joint that can be used in joints with a thickness of 1 mm, 2 mm, and 3 mm. It is fit for 5-13 mm thick coating materials.

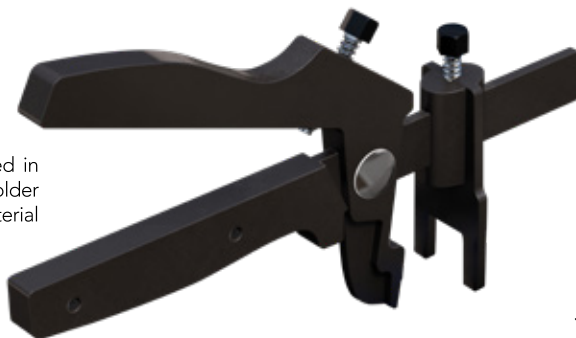
tls-Ws



200 pcs/package

tls-Wp

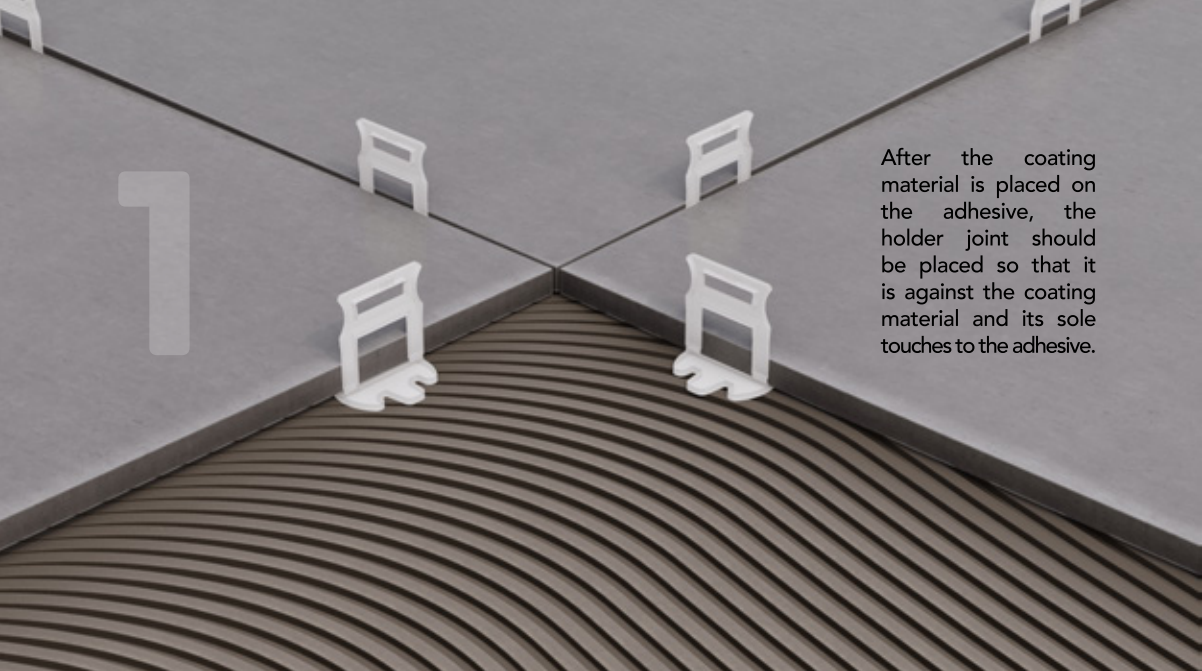
This is the pliers that is used in the process of fixating the holder joint and the coating material together with the wedge.



1 pcs

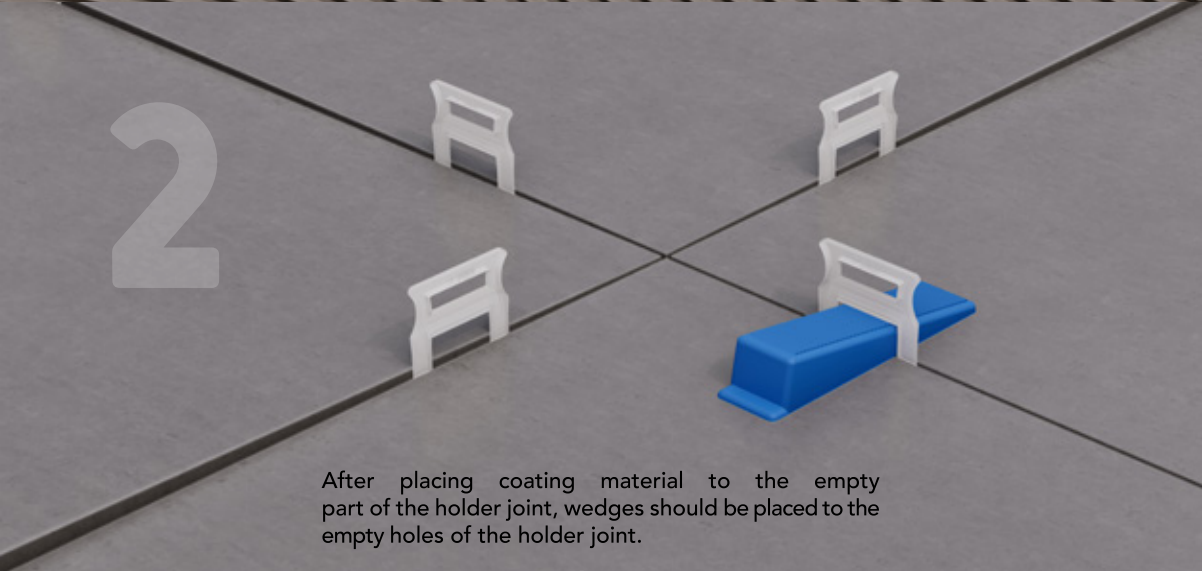


# 1



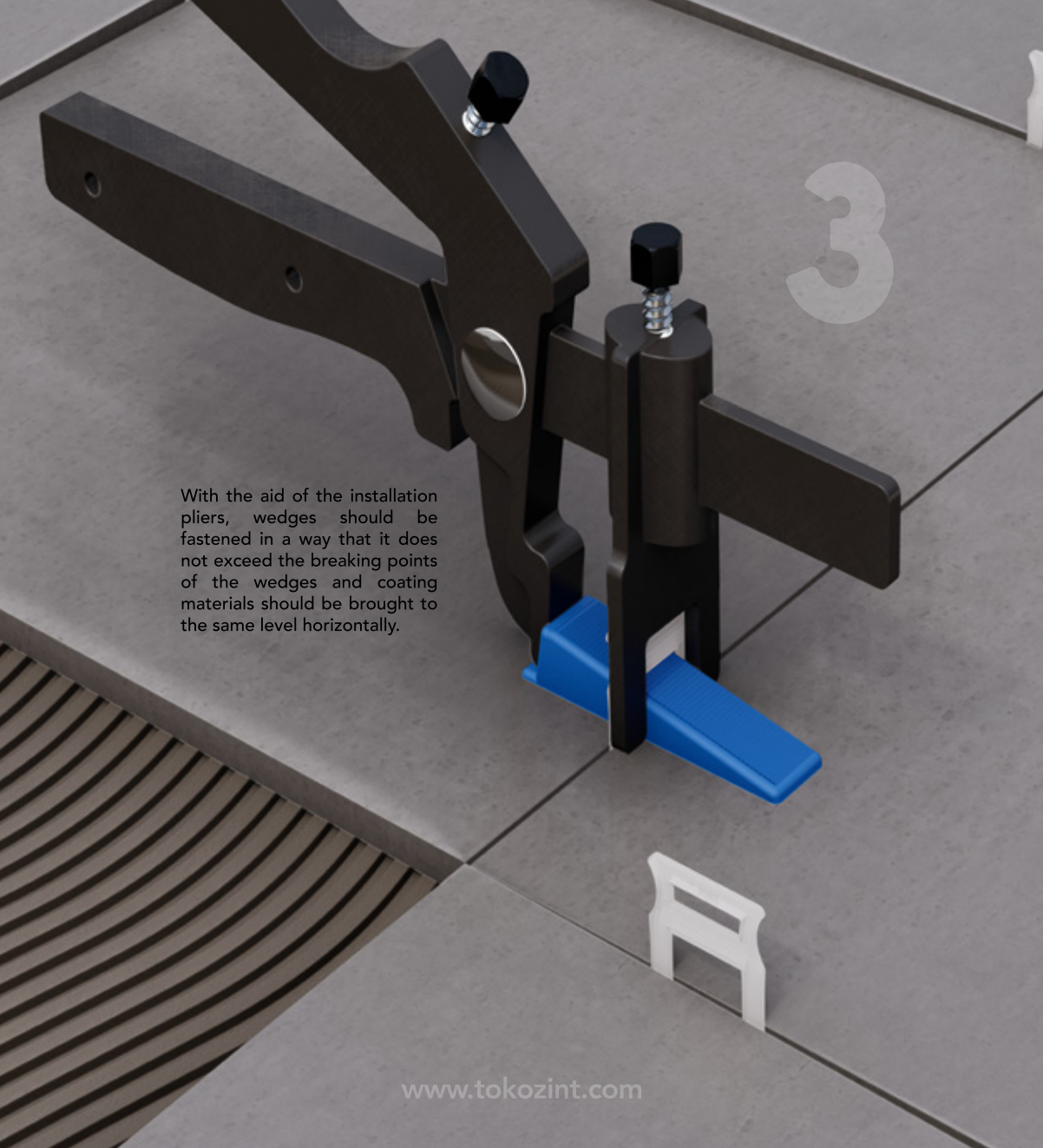
After the coating material is placed on the adhesive, the holder joint should be placed so that it is against the coating material and its sole touches to the adhesive.

# 2

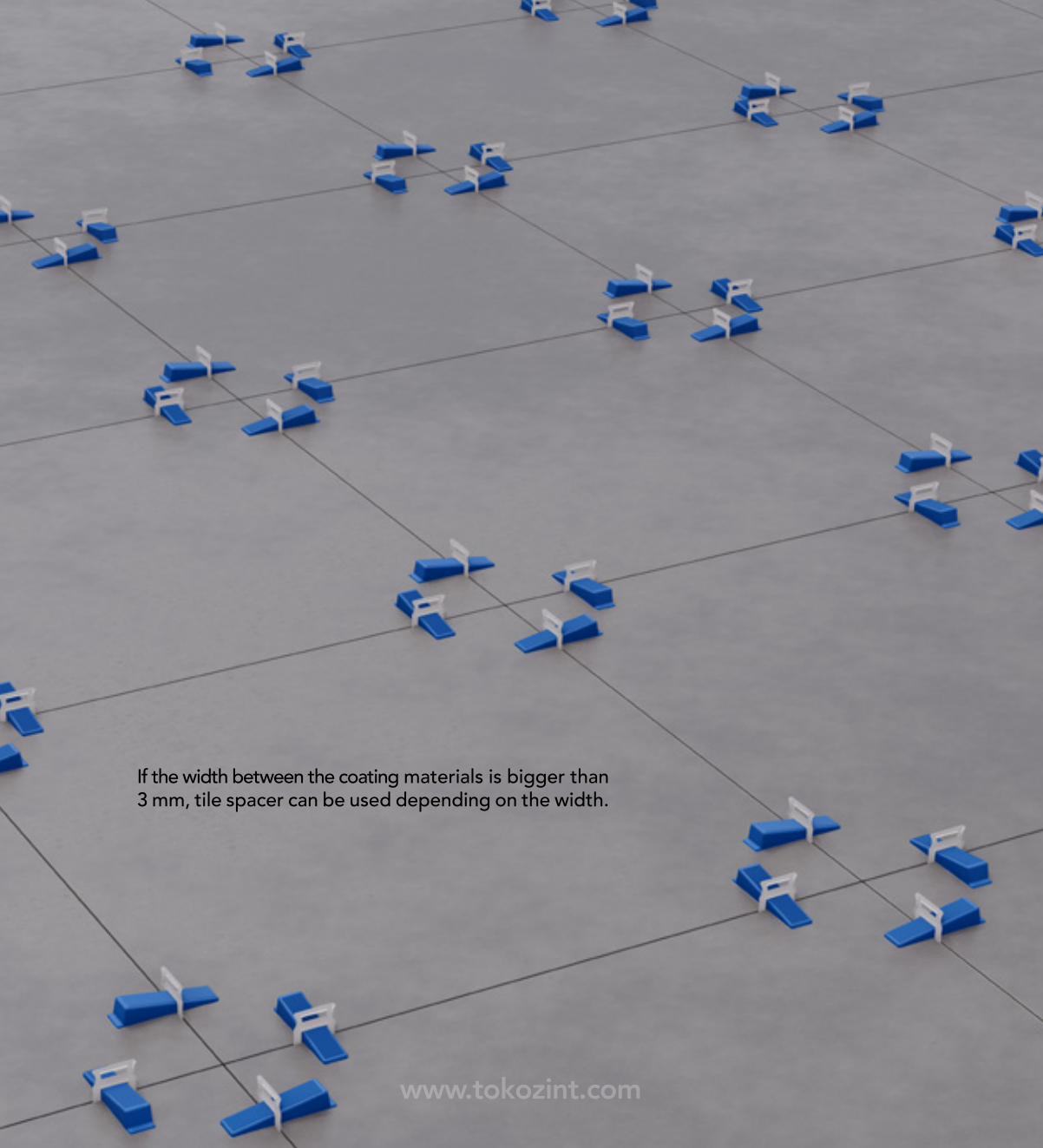


After placing coating material to the empty part of the holder joint, wedges should be placed to the empty holes of the holder joint.






With the aid of the installation pliers, wedges should be fastened in a way that it does not exceed the breaking points of the wedges and coating materials should be brought to the same level horizontally.



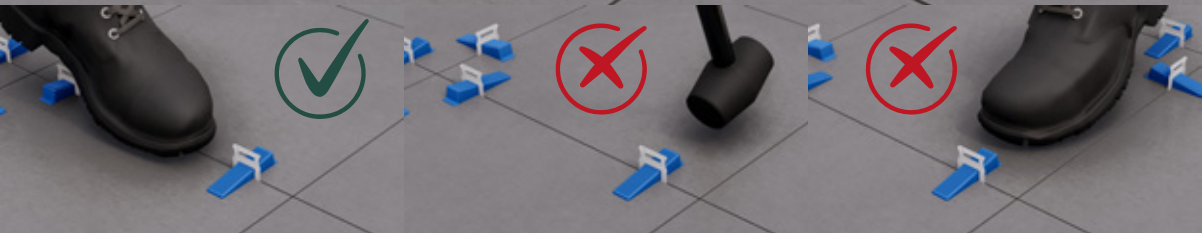
If the width between the coating materials is bigger than 3 mm, tile spacer can be used depending on the width.



After fixating, wait until the adhesive is dry (24 hours). Then the part that remains on the surface of the coating material should be removed by hitting to the sides of the wedge with a mallet with plastic end.



4



After dismantling, the wedges should be collected to be used in later installations. Collected wedges can be re-used 20 to 40 times depending on how the personnel work.



5

The image shows a top-down view of a grey surface with a grid of thin black lines. Numerous blue, triangular fasteners with a white central pin are scattered across the grid. The fasteners are arranged in a somewhat regular pattern, with some appearing in pairs or small groups. The text 'TOKOZ tls-S Series' is centered in the lower half of the image, with a horizontal line underlining the word 'Series'.

TOKOZ tls-S Series

[www.tokozint.com](http://www.tokozint.com)



## What is tls Screw?

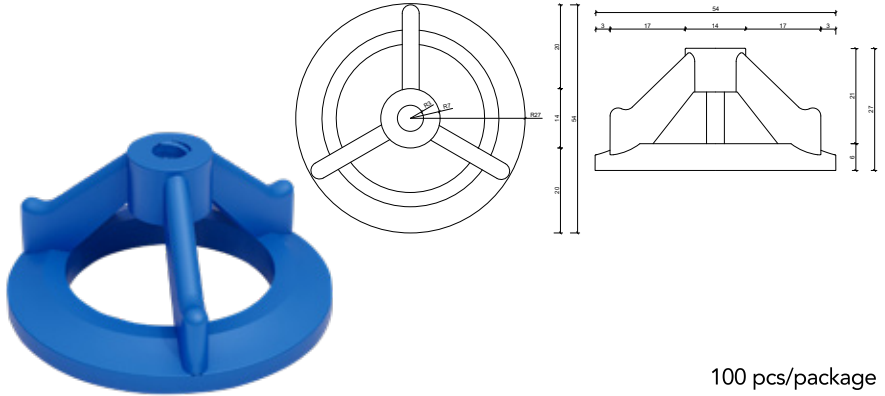
It is a tile leveling system with screws, used in the installation of artificial and natural tiles and ensures that the materials are paved more evenly. The system includes leveling wedge with screws **tls-Sw** and holder joint **tls-Ss**.

The design of the wedge with screws provides application via hand, not requiring any high force.

It can be used at the sides and corners of the coating material.

Through the holes on the wedge with screws, it can be checked at what level the joint canal is.

tls-Sw

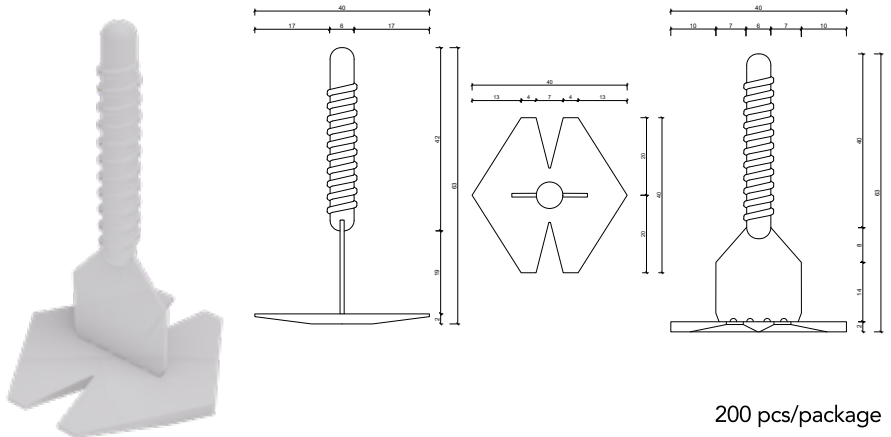


100 pcs/package

The holder joint has the options of 1 mm and 2 mm joint widths.

It can be used for coating materials with a width changing from 3 mm to 17 mm.

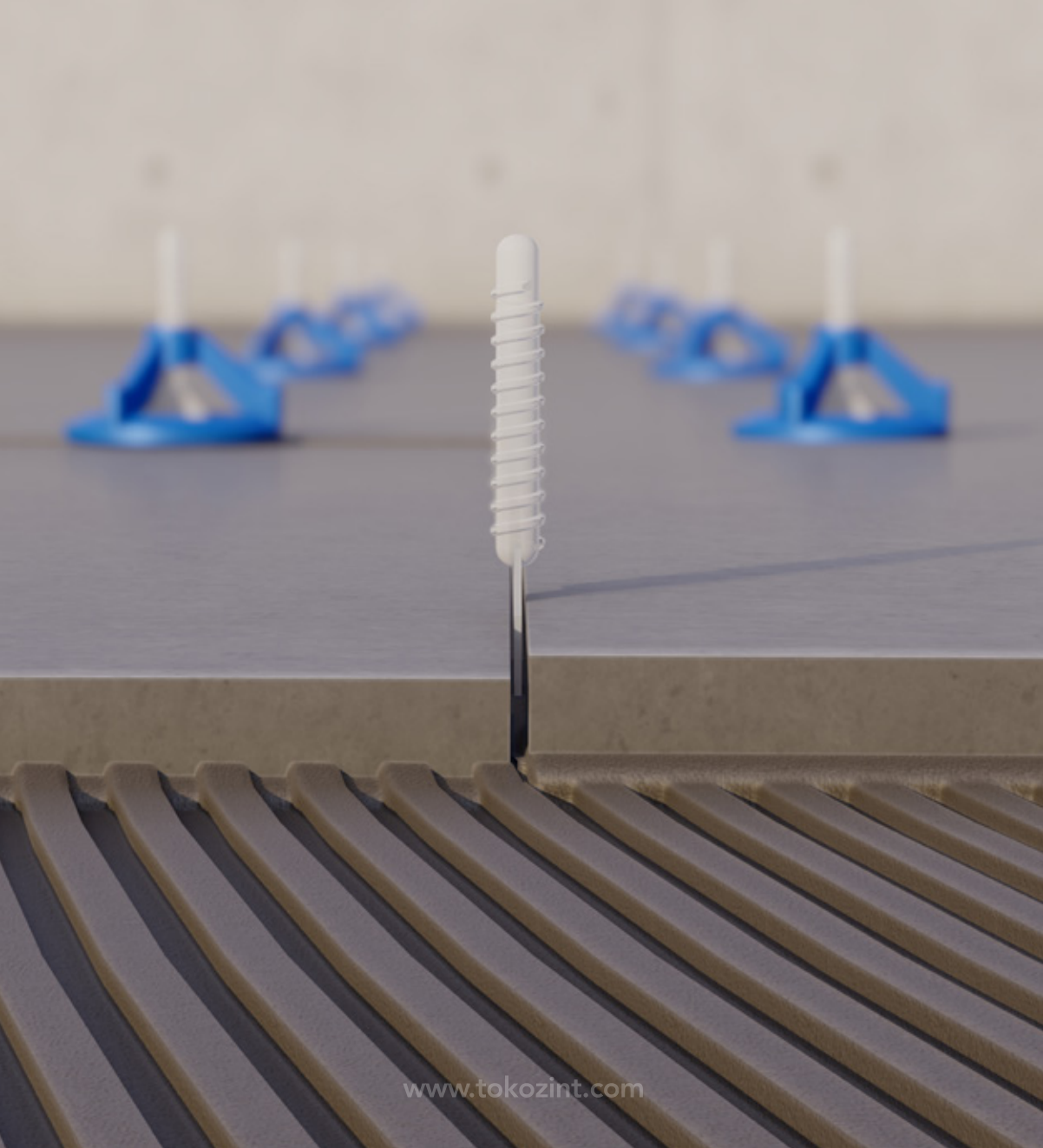
tls-Ss



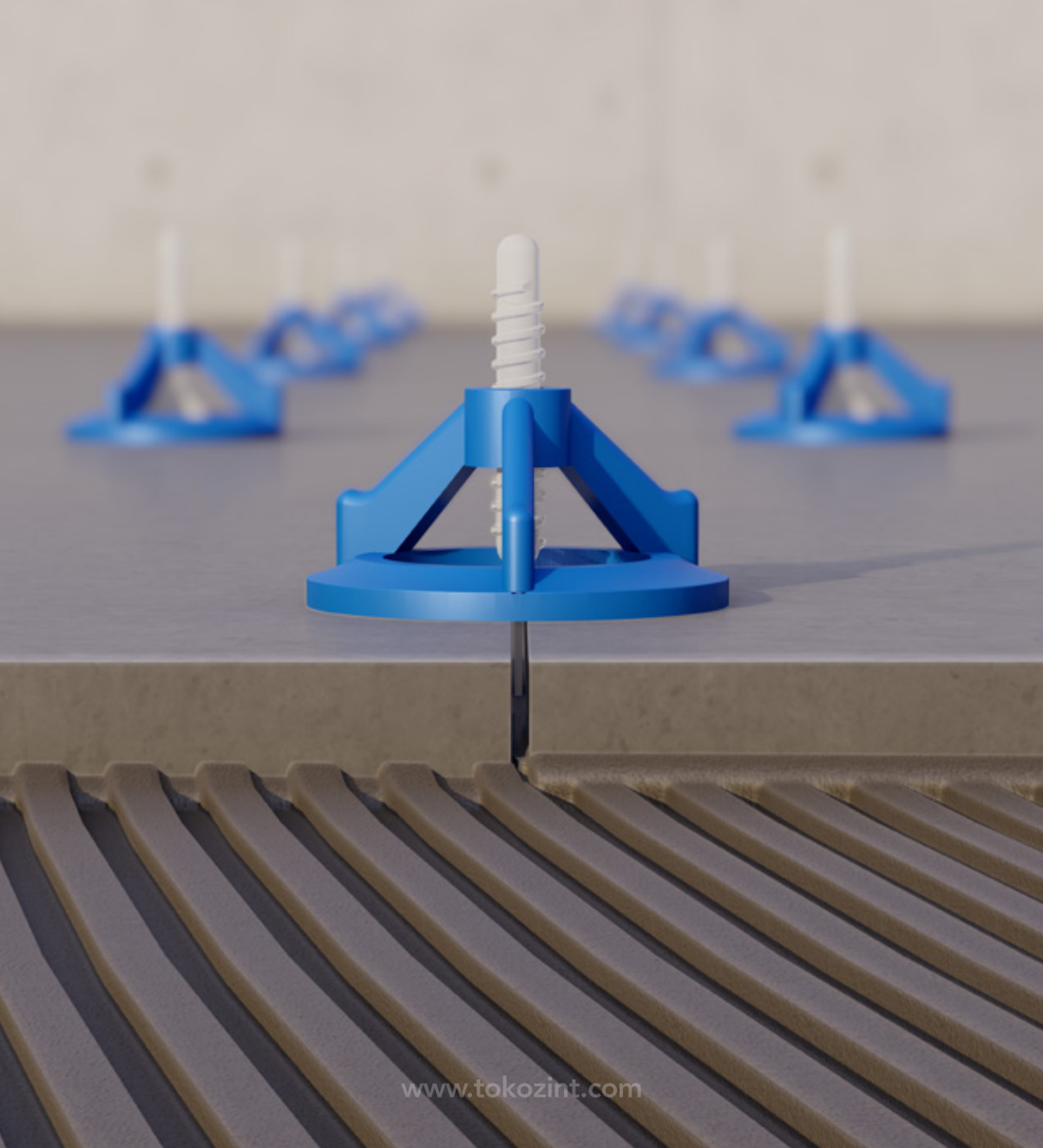
200 pcs/package







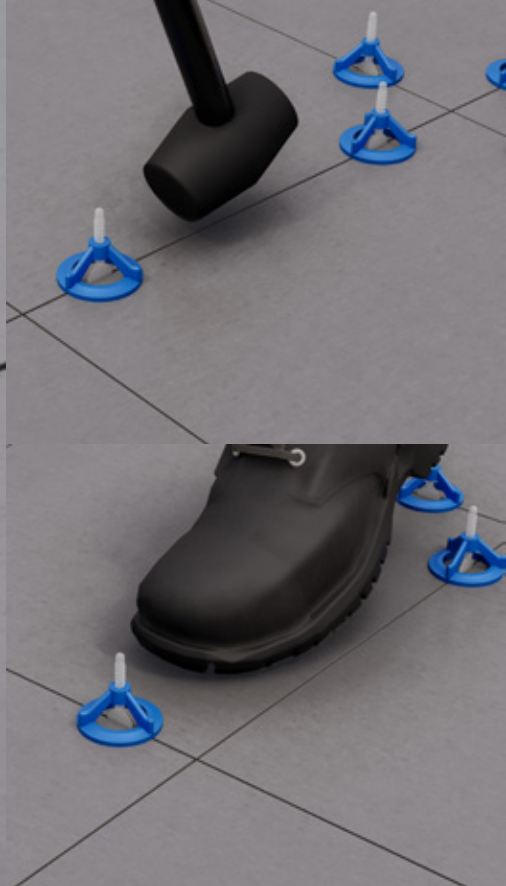




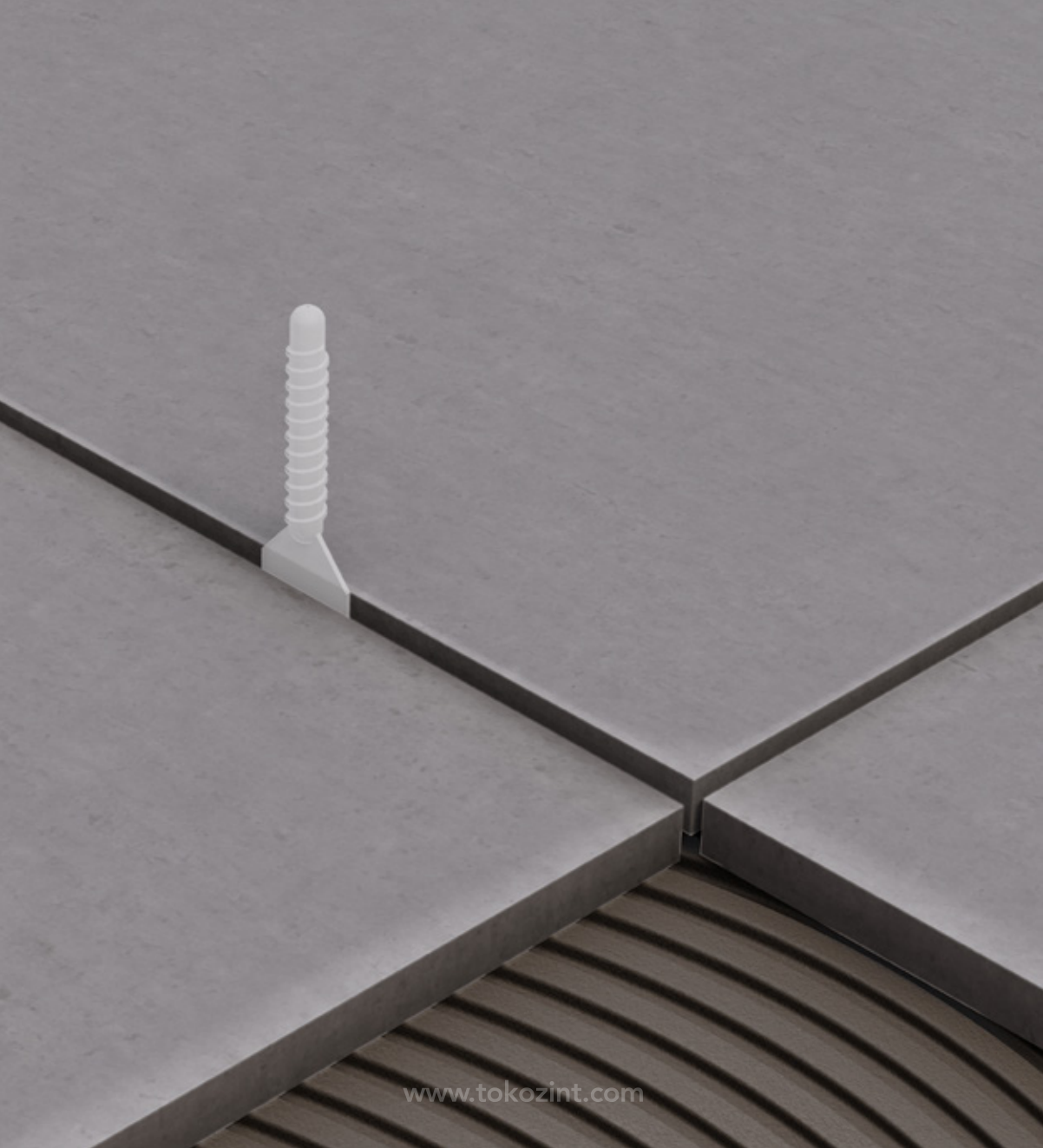
If the width between the coating materials is bigger than 3 mm, tile spacer can be used depending on the width.



After fixating, wait until the adhesive is dry (24 hours). Then the part that remains on the surface of the coating material should be removed by hitting to the sides of the wedge with screws using a mallet with plastic end.



After dismantling, the wedges should be collected to be used in later installations. Collected wedges can be re-used 20 to 40 times depending on how the personnel work.





for  
easy & quick  
tiling  
installations



TOKOZ ULUSLARARASI PLASTİK MALZEMELER SAN. TİC. A.Ş.

+90 212 540 09 49

info@tokoz.com.tr

Haramidere San. Sit. L Blok Pırlanta Sok. NO:70/213 34524  
Beylikdüzü-İstanbul / TURKEY

[www.tokozint.com](http://www.tokozint.com)



All rights reserved. Errors and printing errors excepted.

